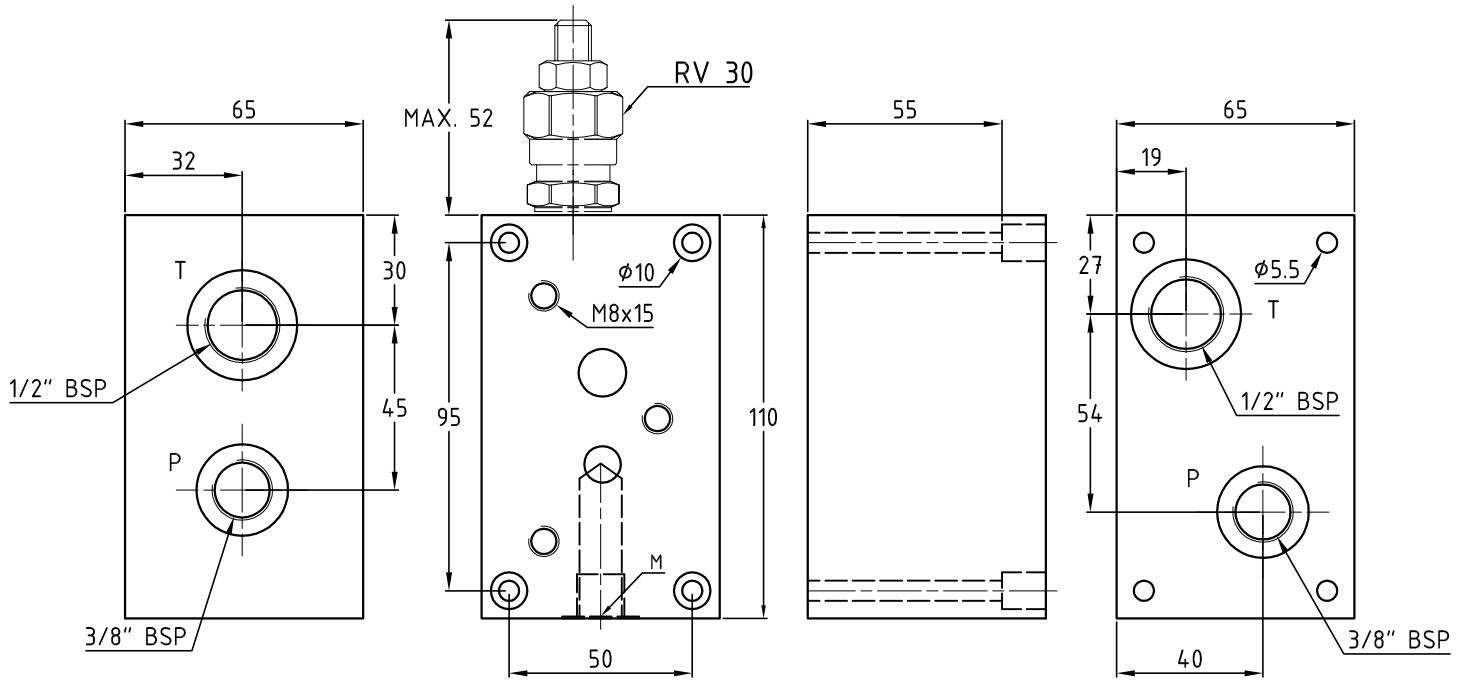
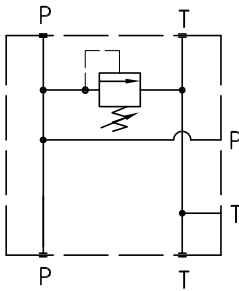


PC33BM

Piastra di base modulare in ghisa a 3 tiranti con valvola di max.
Basic element 3 tie-rods in cast iron with relief valve



Hydraulic diagram



Peso\Weight 2,6 kg

Esempio di ordinazione - Ordering code

PC3 3 BM * *

Piastra componibile in ghisa Cetop 03
Packing plate in cast iron Cetop 03

N° 3 tiranti
N° 3 tie-rods

Piastra di base in ghisa con valvola di max.
Basic element in cast iron with relief valve

Y=5÷55 bar A=25÷110 bar B=50÷250 bar
C=100÷350 bar (page M02)

1 = pred. per valvola di max.
1 = prearranged for relief valve

2 = con valvola di max.
2 = with relief valve