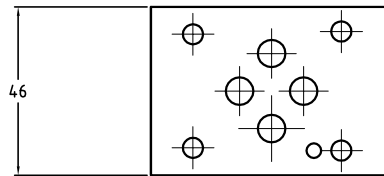
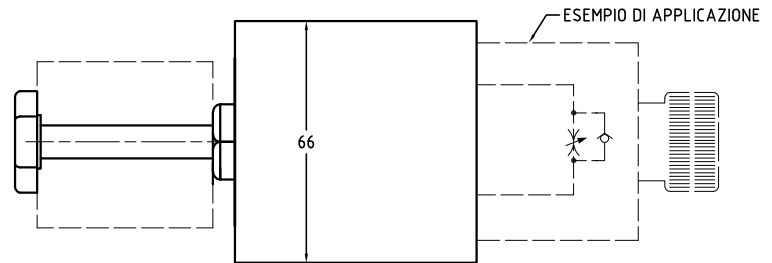
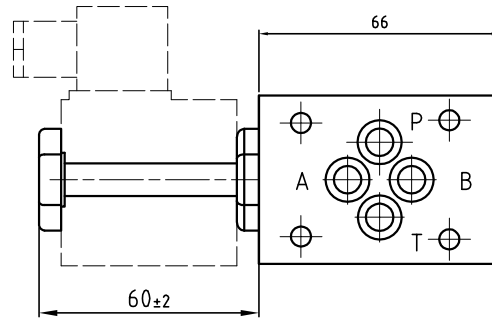
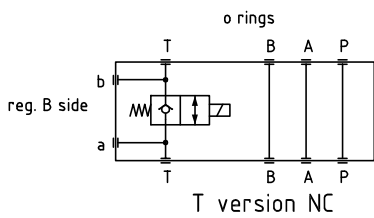
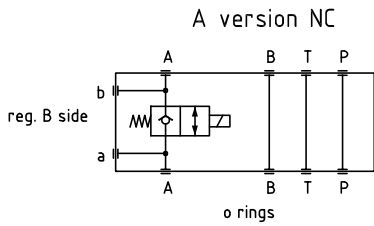
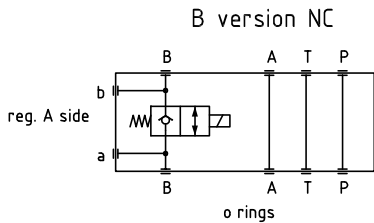
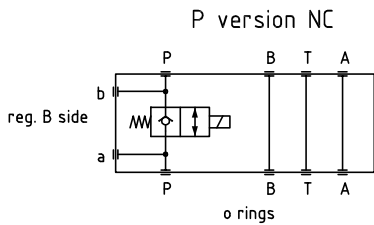


# EMV3FS \*\*

Valvola modulare in ghisa Cetop 03 per Rapido Lento  
Modular valve in cast iron Cetop 03 Fast/slow



Esempio di ordinazione - ordering code

EMV3FS \* \*\* (MO) \*\*

Elemento mod. in ghisa con rit. elett e regolatore  
Modular element in cast iron with solenoid valve and flow regulator

A = Regolazione su A  
A = Regulation on A

B = Regolazione su A  
B = Regulation on A

P = Regolazione su B  
P = Regulation on B

T = Regolazione su T  
T = Regulation on T

Tensione solenoide  
Solenoid coil

12DC=12 VDC 24DC=24 VDC  
24AC=24 VAC-50/60Hz

110AC=110 VAC-50/60Hz  
220AC=220 VAC-50/60Hz

Vedere sez. P

NO = normalmente aperto (MO comando manuale)  
NO = normally open (MO manual override)

See section P

NC = normalmente chiuso (MO comando manuale)  
NC = normally closed (MO manual override)