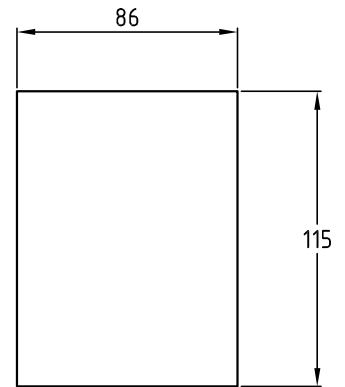
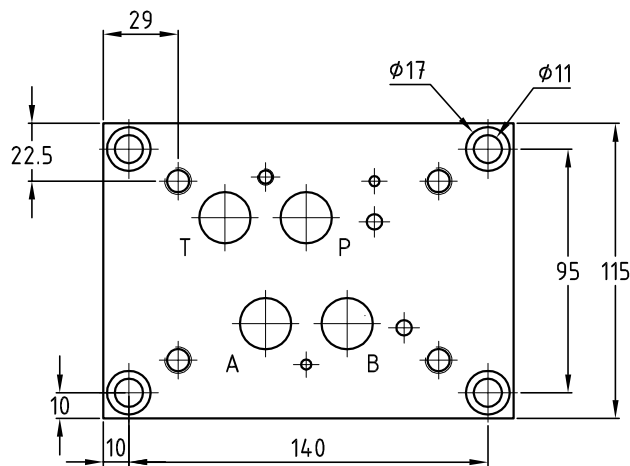
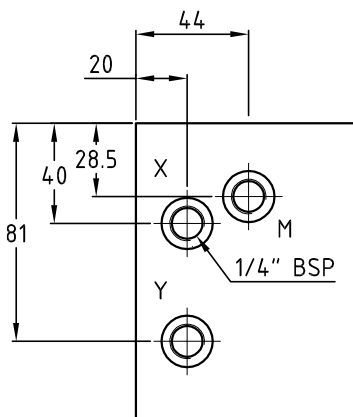
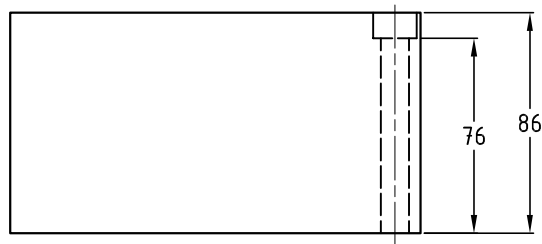
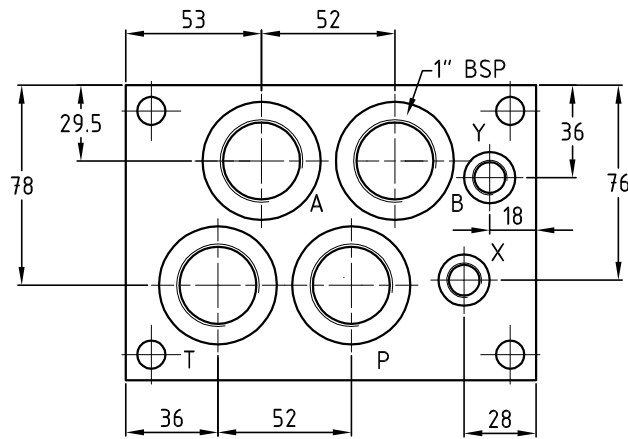


PS7RR100

Piastra singola Cetop 07 in ghisa con attacchi A B P T posteriori
 Basic element Ceop 07 in cast iron with A B P T rear ports



Peso\Weight 10kg

Esempio di ordinazione - Ordering code

PS7

RR

100

Piastra singola Cetop 07
 Single subplate Cetop 07

RR = P T A B attacchi post.
 RR = P T A B rear ports

100 = attacchi 1" BSP
 100 = ports 1" BSP