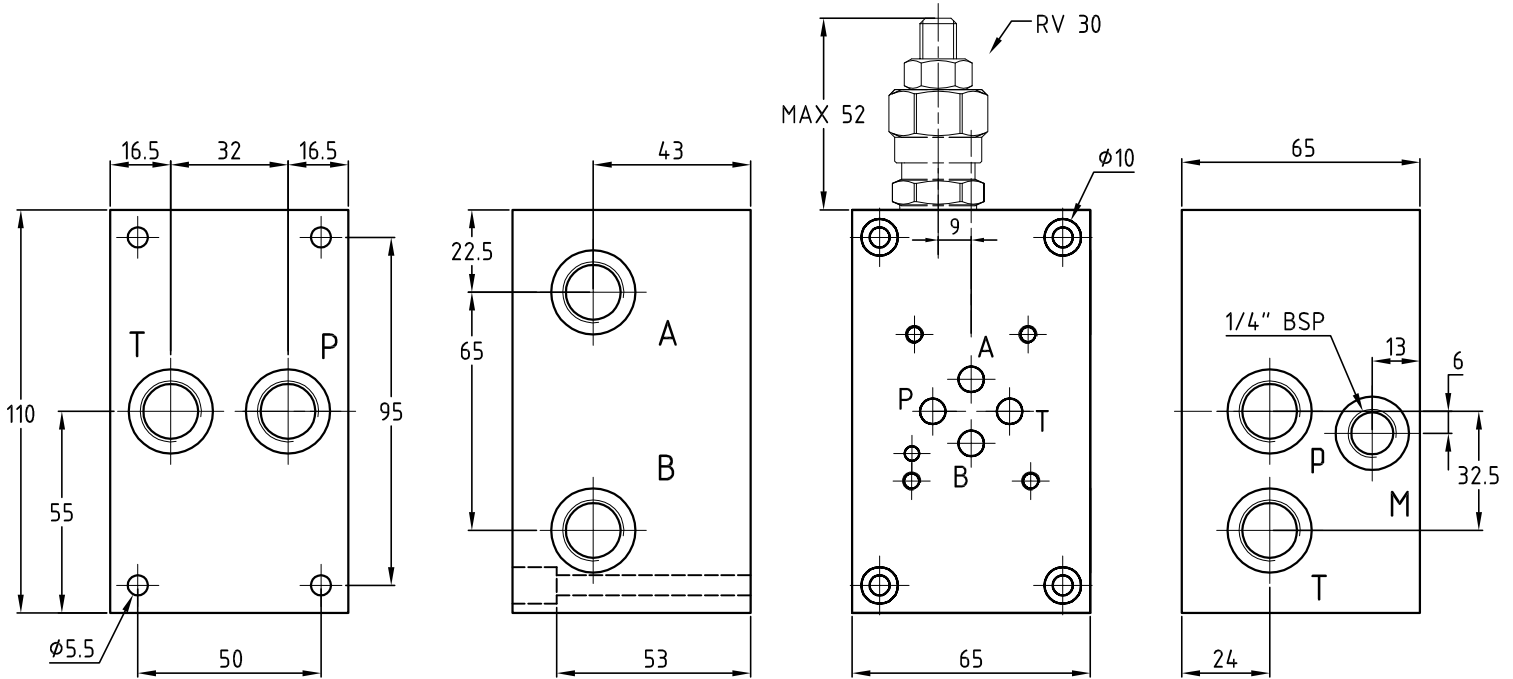
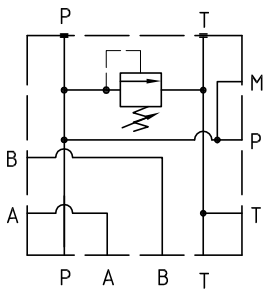


PS3RS382**

Piastra di base Cetop 03 in ghisa con valvola di max.
Basic element in cast iron Cetop 03 with relief valve



Hydraulic diagram



Peso\Weight 2,6 kg

Esempio di ordinazione - Ordering code

PS3 RS 38 * *

Piastra singola Cetop 03 in ghisa
Basic element Cetop 03 in cast iron

RS = attacchi posteriori e laterali
RS = rear and side ports

38 = attacchi 3/8" BSP
38 = ports 3/8" BSP

Y=5÷55 bar A=25÷110 bar B=50÷250 bar
C=100÷350 bar

1 = pred. per valvola di max. RV 30
1 = prearranged for relief valve RV 30
2 = con valvola di max. RV 30 (pag. M02)
2 = with relief valve RV 30 (page M02)