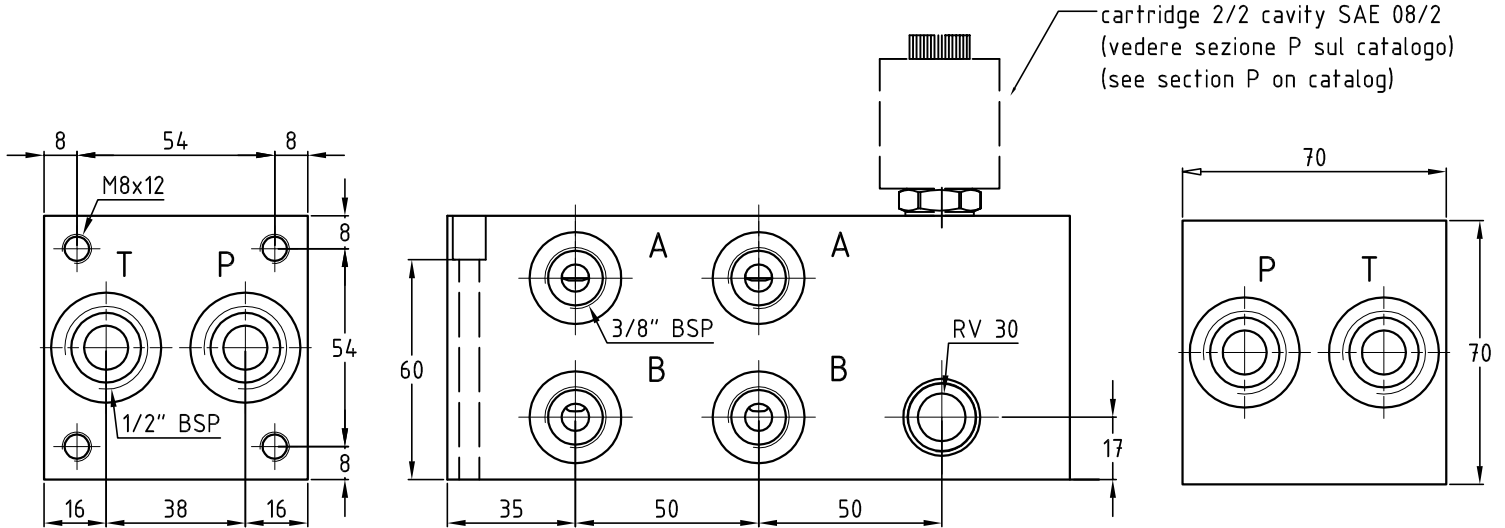


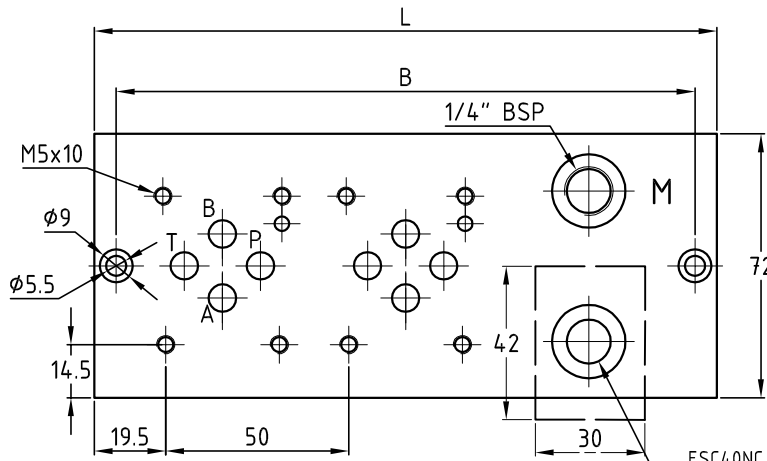
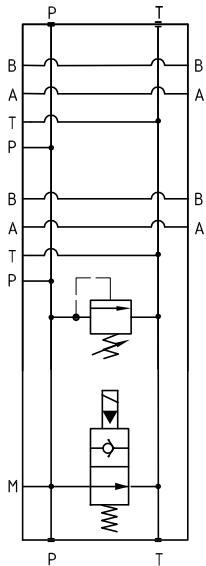
# MBA 33 VL

Piastra mult. in alluminio per elettrovalvole cetop 03 con utilizzi A-B laterali predisposta per valvola a comanda cavità SAE.

Manifold in aluminium for electrovalves Cetop 03 with A-B side ports and prearranged for SAE cartridge valve 2 way 2 position



Schema idraulico con valvola NO  
Hydraulic diagram with cartridge valve NO



ESC40NC  
ESC40NO  
Vedi catalogo alla sezione P  
See catalog on section P

Dimension table

N° Stat.	L	B	Kg
1	120	108	1.3
2	170	158	2.0
3	220	208	2.7
4	270	258	3.4
5	320	308	4.1
6	370	358	4.8
7	420	408	5.5
8	470	458	6.2
9	520	508	6.9

## Esempio di ordinazione - Ordering code

MBA33 VL/ \* S \*\* \*\* 2 \*

Monoblocco in alluminio Cetop 03 con venting  
Aluminium block Cetop 03 with venting

N° di posizioni  
Stations number

S = attacchi A-B laterali  
S = side ports A-B

Y=5÷55 bar A=25÷110 bar B=50÷250 bar  
(page M02)

2 = con valvola di max. RV 30  
2 = with relief valve RV 30

Vedere sezione P (See Section P) 12=12VDC  
24=24VDC 110=110VDC 220=220VDC

NC = Norm. chiusa NO = Norm. aperta  
NC = Norm. close NO = Norm. open