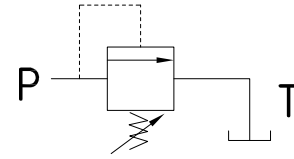


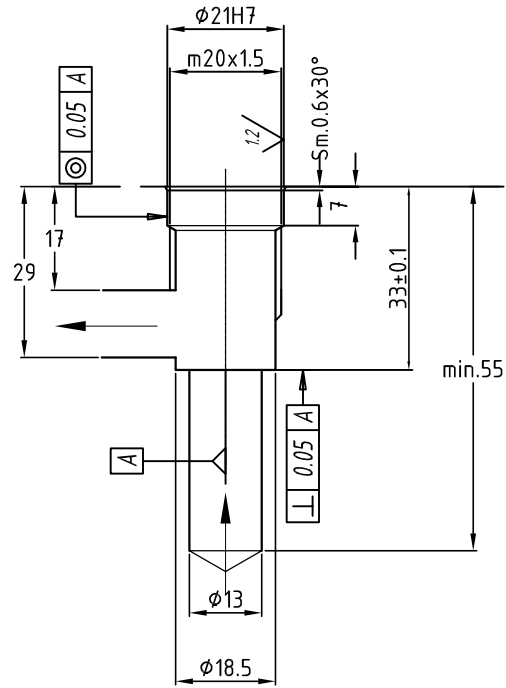
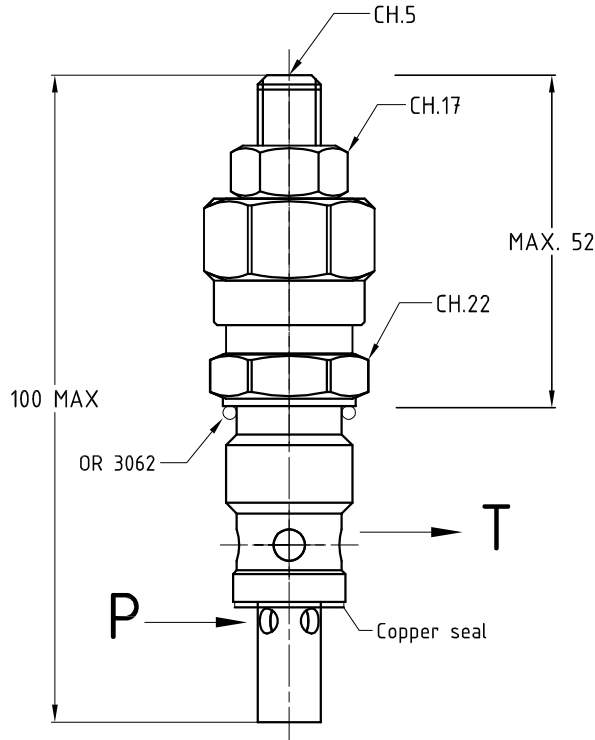


RV-30

Cartuccia di massima pressione
Pressure relief valve

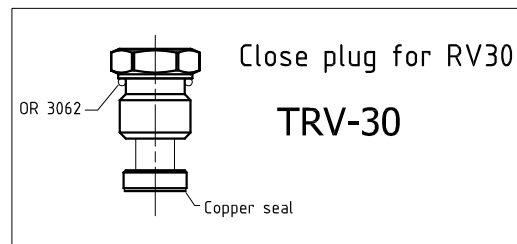


Cavity RV30



- La taratura della pressione si ottiene allentando il dado di bloccaggio ch.17 e ruotando la vite della cartuccia ch.5.
- Fluido da utilizzare: olio idraulico a norme DIN 51524 con viscosità compresa tra 30 e 100 mm²/s (cSt) a 40° C
- Filtrazione richiesta del fluido impiegato 25μ
- Temperatura fluido idraulico: da -20° a +75° C

- Calibration pressure is obtained by loosening the lock nut ch.17 and turning the cartridge screw ch.5.
- Fluid to be used: hydraulic oil to DIN 51524 standards with a viscosity between 30 and 100 mm²/s (cSt) to 40° C
- The fluid filtration requested is 25μ
- Temperature hydraulic fluid: -20° to +75° C



Esempio di ordinazione - Ordering code

RV 30 *

Cartuccia di massima pressione
Pressure relief valve

30 = Q 30 L/min.

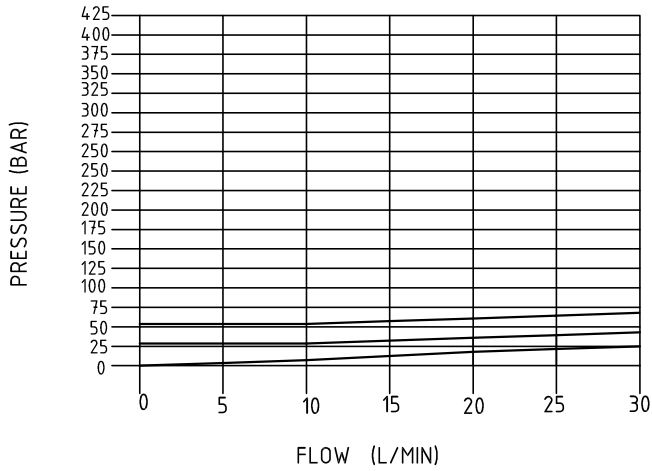
Y=5÷55 bar A=25÷110 bar B=50÷250 bar
C=100÷350 bar D=100÷420 bar



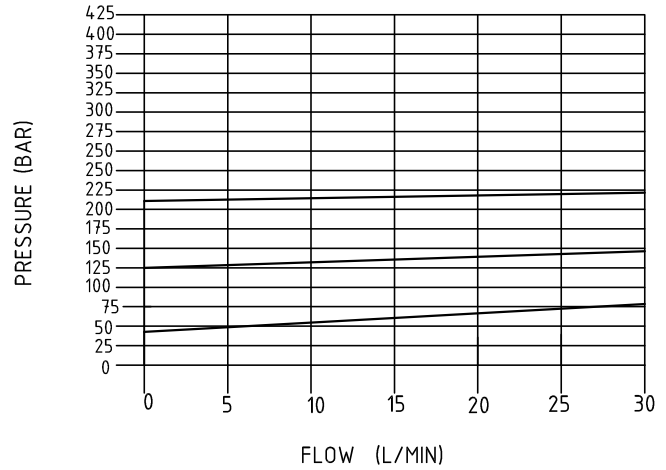
RV-30

DIAGRAMMI FLUSSO

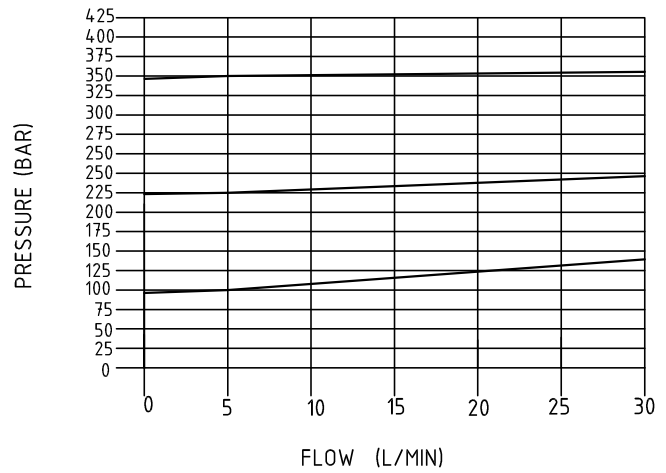
SPRING= Y (5-55BAR)



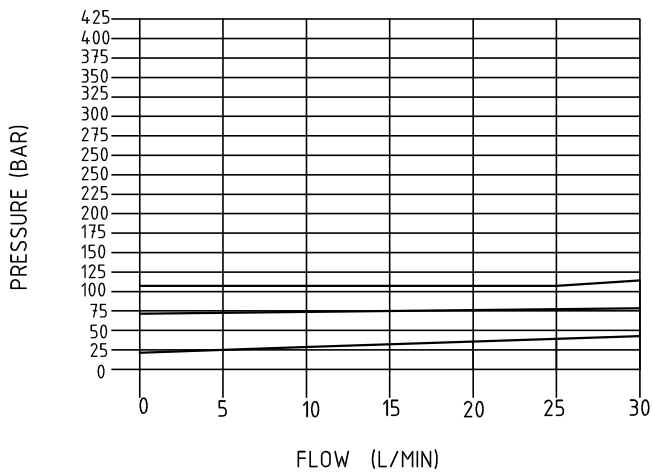
SPRING= B (50-215BAR)



SPRING= G (100-350BAR)



SPRING= N (25-110BAR)



SPRING= V (100-420BAR)

