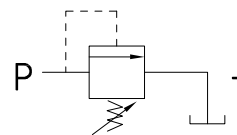




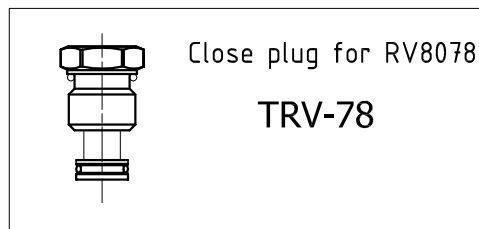
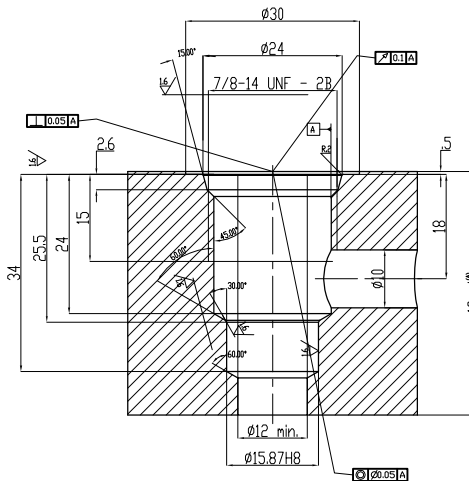
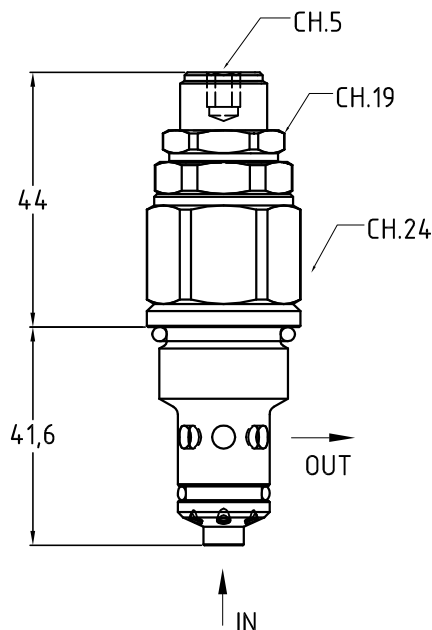
RV 80 78

Hydraulic diagram



Cartuccia di massima pressione ad azione diretta
Pressure relief valve direct action

SAE 10/2



- La taratura della pressione si ottiene allentando il dado di bloccaggio ch.19 e ruotando la vite della cartuccia ch.5.
- Fluido da utilizzare: olio idraulico a norme DIN 51524 con viscosità compresa tra 30 e 100 mm²/s (cSt) a 40° C
- Filtrazione richiesta del fluido impiegato 25µ
- Temperatura fluido idraulico: da -20° a +75° C

- Calibration pressure is obtained by loosening the lock nut ch.19 and turning the cartridge screw ch.5.
- Fluid to be used: hydraulic oil to DIN 51524 standards with a viscosity between 30 and 100 mm²/s (cSt) to 40° C
- The fluid filtration requested is 25µ
- Temperature hydraulic fluid: -20° to +75° C

Esempio di ordinazione - Ordering code

RV 80 78 *

Cartuccia di massima pressione
Pressure relief valve

80 = 80 L/min.

7/8 = 7/8 unf SAE 10/2

SETTING PRESSURE TABLE

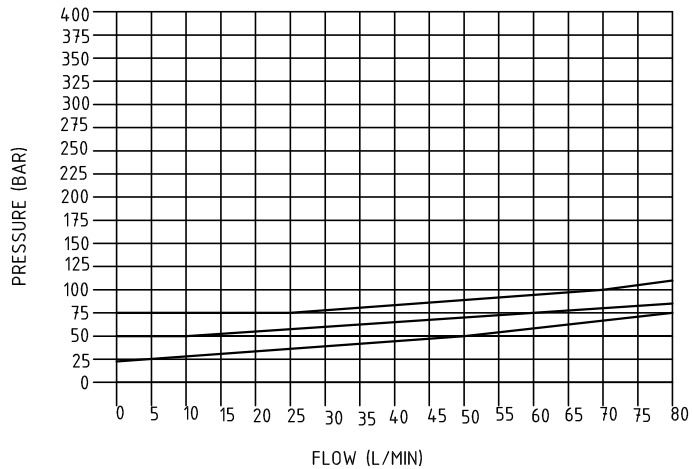
RV80/78	Optimized	Total
	Y= 5÷75	(5÷110)
A= 75÷125	(10÷180)	
B= 125÷220	(10÷240)	
C= 220÷350	(50÷350)	



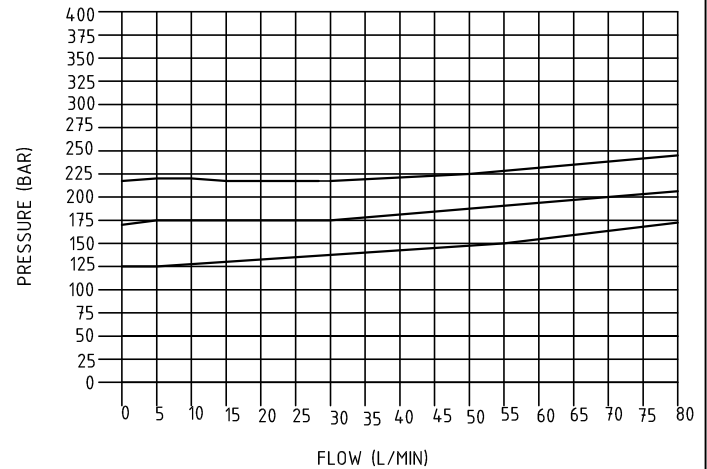
RV 80 78

DIAGRAMMI FLUSSO

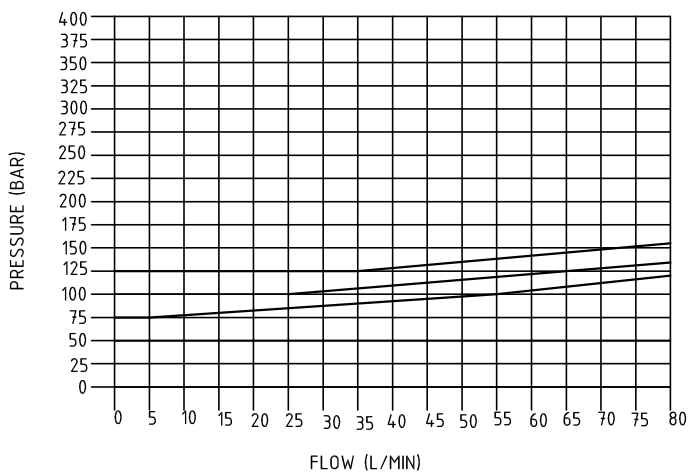
SPRING = N (25-75BAR)



SPRING = G (126-220BAR)



SPRING = B (76-125BAR)



SPRING = W (221-350BAR)

