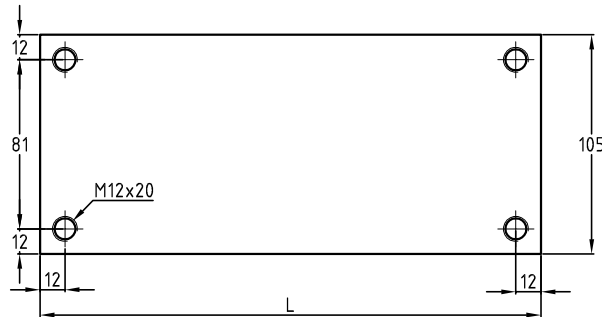
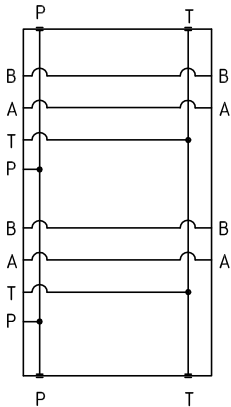


MB 15

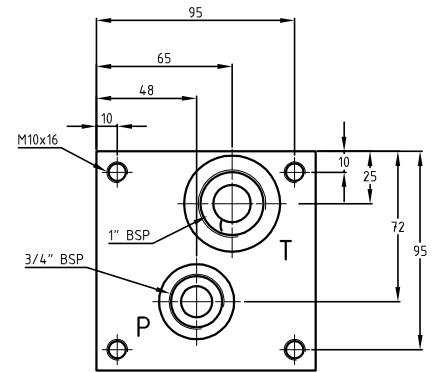
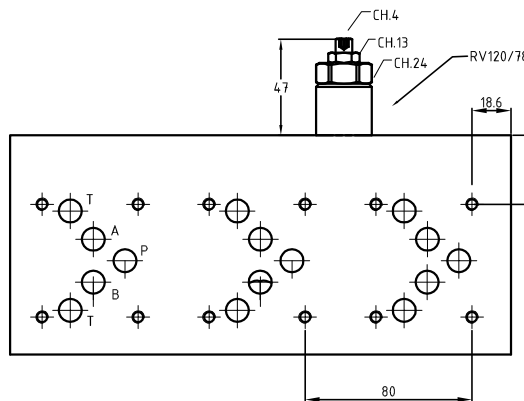
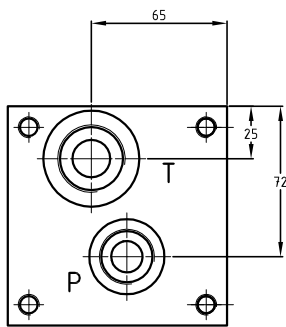
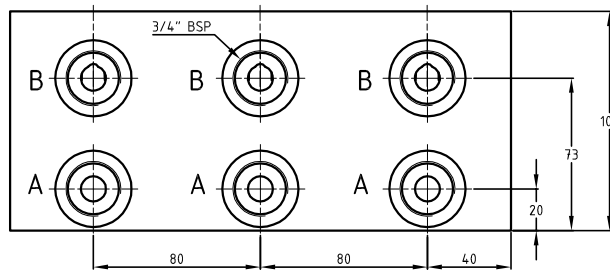
Piastre multiple in ghisa per elettrovalvole Cetop 05 con utilizzi A-B laterali
 Manifold in cast iron for electrovalves Cetop 05 with A-B side ports

Hydraulic diagram



Dimension table

N° Stat.	L	Kg
1	80	5.5
2	160	12
3	240	18.5
4	320	25
5	400	31.5
6	480	38



Esempio di ordinazione - Ordering code

MB15 / * S 34 *

Monoblocco in ghisa Cetop 05
 Block in cast iron Cetop 05

N° di posizioni
 Stations number

S = attacchi A-B laterali
 S = side ports A-B

0 = senza valvola di max.
 0 = without relief valve
 2 = con valvola di max. RV 120/78 sez.M07
 2 = with relief valve RV 120/78 see sect. M07

34 = attacchi da 3/4" BSP
 34 = ports 3/4" BSP