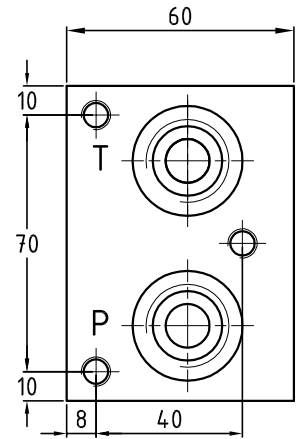
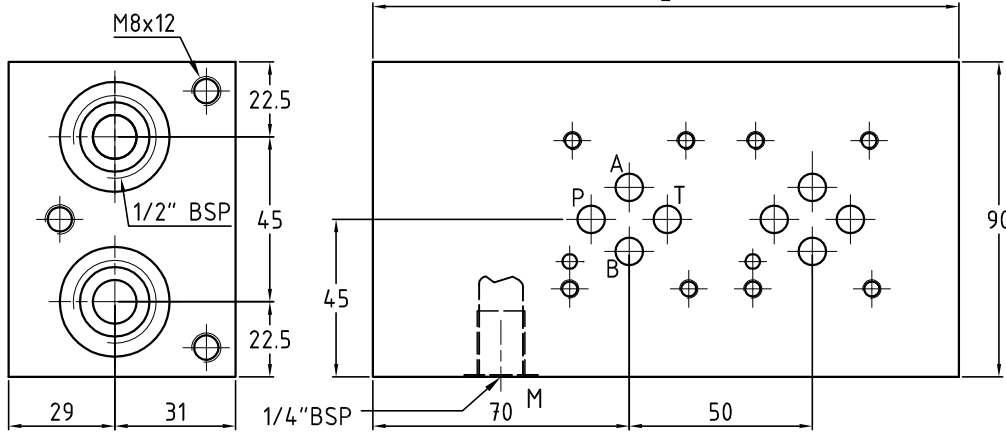
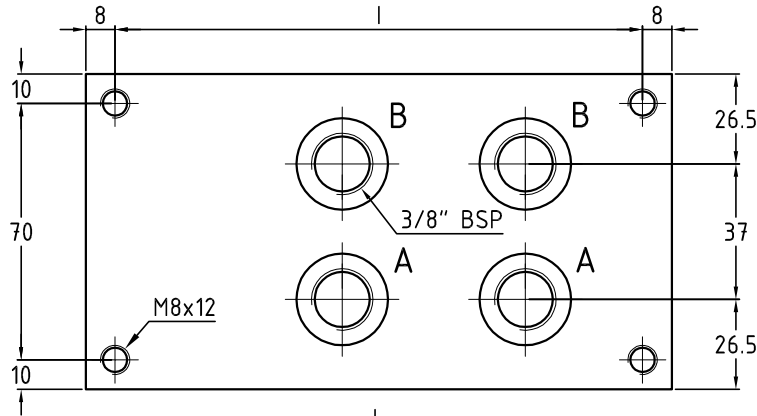


MBA 23

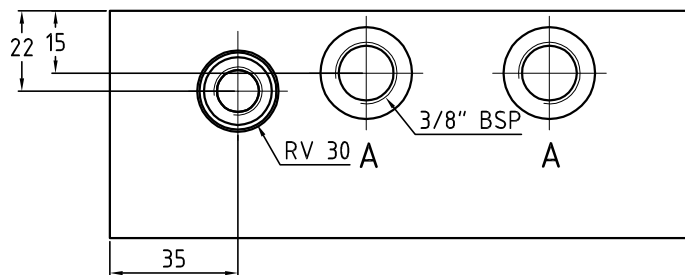
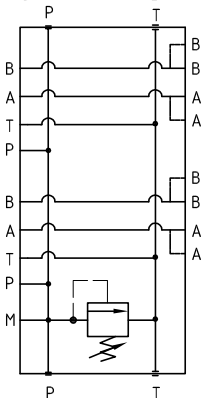
Piastre multiple in alluminio per elettrovalvole Cetop 03 con utilizzi A-B post. o post. e lat.
 Aluminium block for electrovalves Cetop 03 with A-B rear ports or rear and side ports



Dimension table

N° Stat.	L	I	Kg
1	110	94	1,4
2	160	144	2,3
3	210	194	3,0
4	260	244	3,7
5	310	294	4,5
6	360	344	5,2
7	410	394	5,9
8	460	444	7,0
9	510	594	8,1

Hydraulic diagram



Esempio di ordinazione - Ordering code

MBA23 / * * ** * *

Su richiesta RV SAE 10/2 (pagina M04)
 On request RV SAE 10/2 (page M04)

Monoblocco in alluminio Cetop 03
 Aluminium block Cetop 03

N° di posizioni
 Stations number

R = attacchi A-B posteriori
 R = rear ports A-B

RS = attacchi A-B posteriori e laterali (solo versione 38)
 RS = rear and side ports A-B (only version 38)

Y=5÷55 bar A=25÷110 bar B=50÷250 bar
 (page M02)

0 = senza valvola di max.

0 = without relief valve

1 = pred. per valvola di max. RV 30

1 = prearranged for relief valve RV 30

2 = con valvola di max. RV 30

2 = with relief valve RV 30

38 = attacchi da 3/8" BSP

38 = ports 3/8" BSP

12 = attacchi da 1/2" BSP (su richiesta)

12 = ports 1/2" BSP (on request)