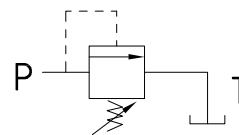
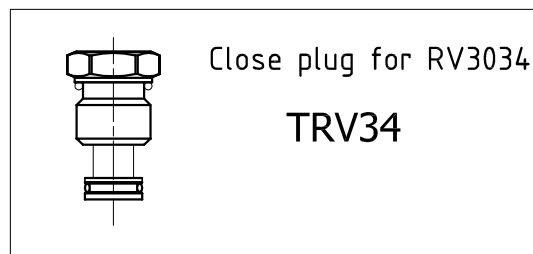
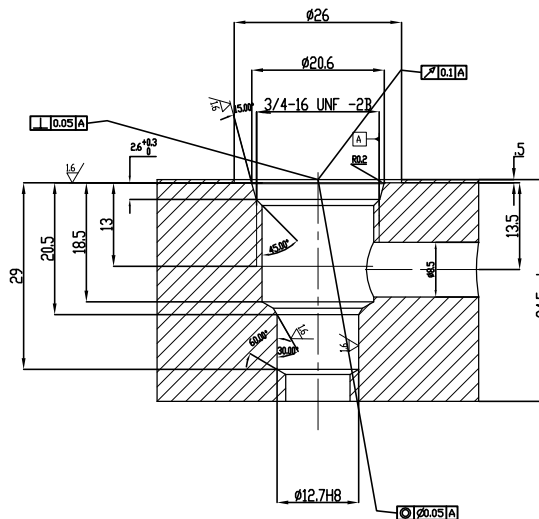
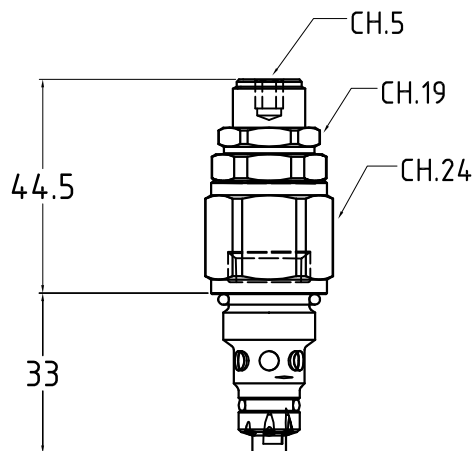


RV 30 34



Cartuccia di massima pressione ad azione diretta
Pressure relief valve direct action



- La taratura della pressione si ottiene allentando il dado di bloccaggio ch.19 e ruotando la vite della cartuccia ch.5.
- Fluido da utilizzare: olio idraulico a norme DIN 51524 con viscosità compresa tra 30 e 100 mm²/s (cSt) a 40° C
- Filtrazione richiesta del fluido impiegato 25μ
- Temperatura fluido idraulico: da -20° a +75° C
- Coppia di serraggio 40-45 Nm

- Calibration pressure is obtained by loosening the lock nut ch.19 and turning the cartridge screw ch.5.
- Fluid to be used: hydraulic oil to DIN 51524 standards with a viscosity between 30 and 100 mm²/s (cSt) to 40° C
- The fluid filtration requested is 25μ
- Temperature hydraulic fluid: -20° to +75° C
- Installation torque 40-45 Nm

Esempio di ordinazione - Ordering code

RV 30 34 *

Cartuccia di massima pressione
Pressure relief valve

30 = 30 L/min.

34 = 3/4 unf SAE 08/2

SETTING PRESSURE TABLE

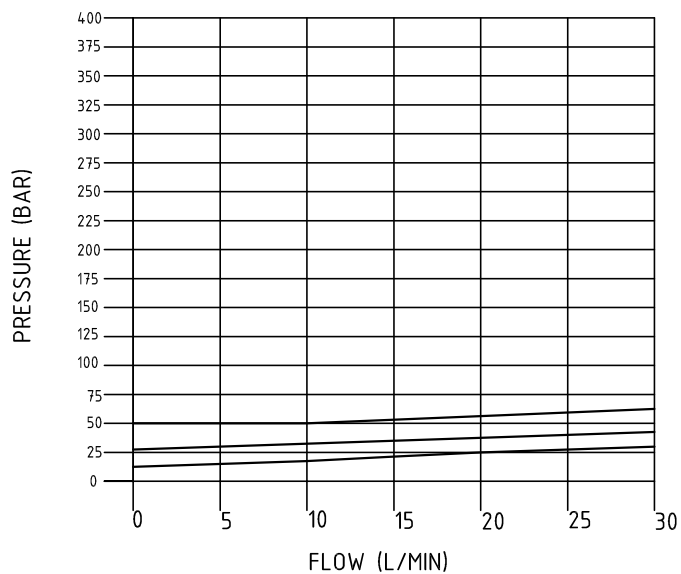
RV30/34	Total range	
	Y= 15÷60	
	A= 25÷135	
	B= 50÷220	
	C= 120÷350	



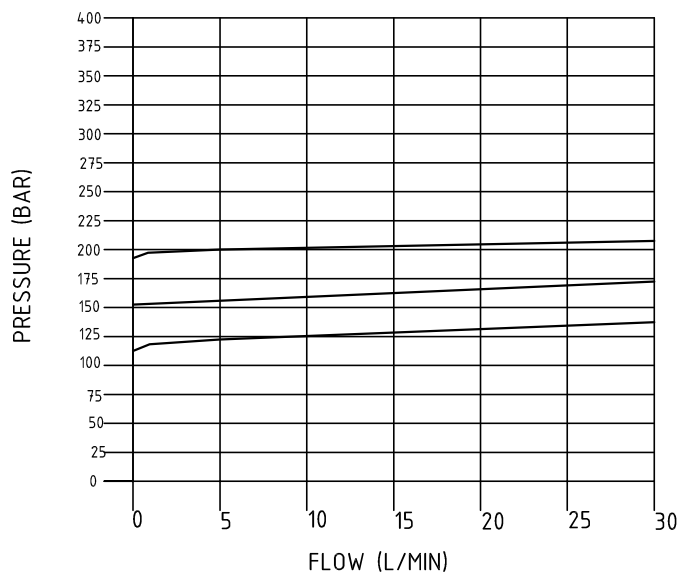
RV 30 34

DIAGRAMMI FLUSSO

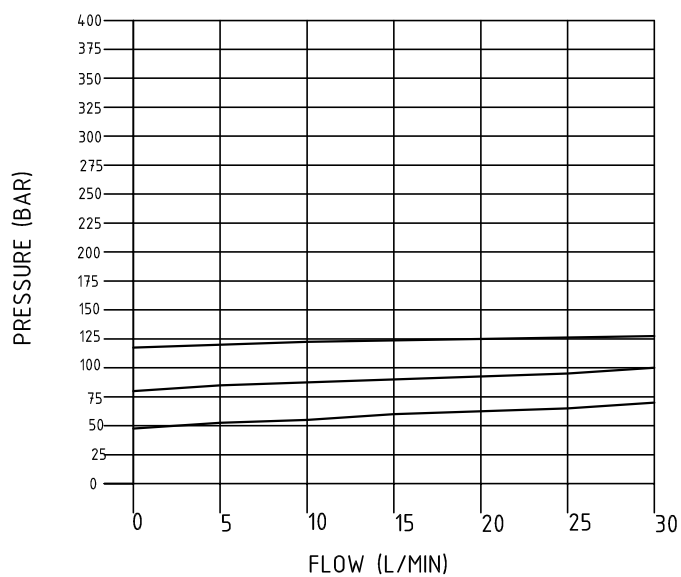
SPRING = Y (15-50BAR)



SPRING = B (121-200BAR)



SPRING = N (51-120BAR)



SPRING = G (201-350BAR)

