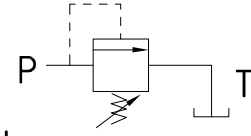
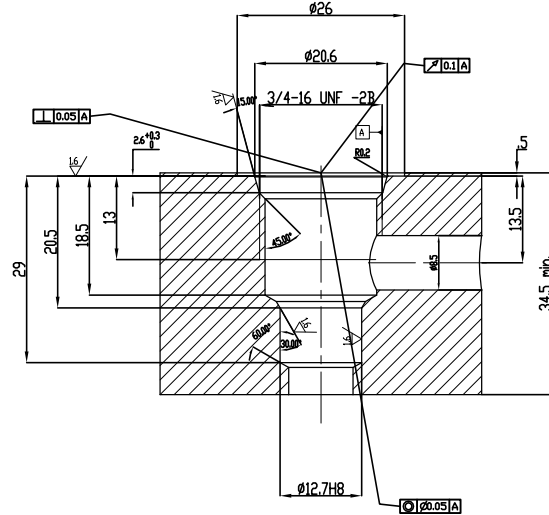
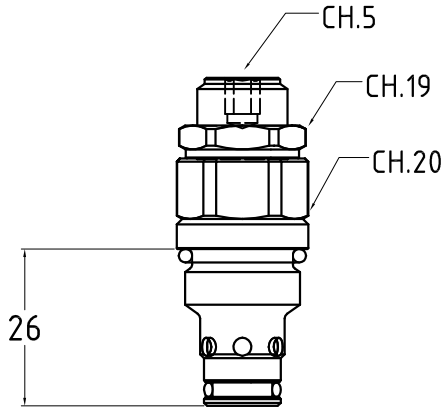


RV 25 34

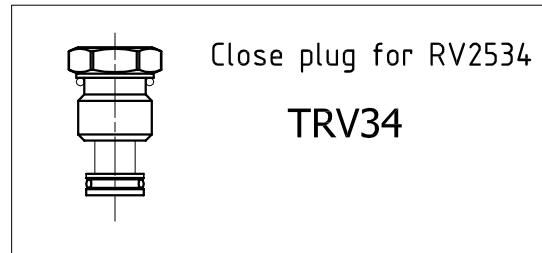


Cartuccia di massima pressione ad azione diretta
Pressure relief valve direct action



- La taratura della pressione si ottiene allentando il dado di bloccaggio ch.19 e ruotando la vite della cartuccia ch.5.
- Fluido da utilizzare: olio idraulico a norme DIN 51524 con viscosità compresa tra 30 e 100 mm²/s (cSt) a 40° C
- Filtrazione richiesta del fluido impiegato 25µ
- Temperatura fluido idraulico: da -20° a +75° C

- Calibration pressure is obtained by loosening the lock nut ch.19 and turning the cartridge screw ch.5.
- Fluid to be used: hydraulic oil to DIN 51524 standards with a viscosity between 30 and 100 mm²/s (cSt) to 40° C
- The fluid filtration requested is 25µ
- Temperature hydraulic fluid: -20° to +75° C



Esempio di ordinazione - Ordering code

RV 25 34 *

Cartuccia di massima pressione
Pressure relief valve

25 = 25 L/min.

34 = 3/4 unf SAE 08/2

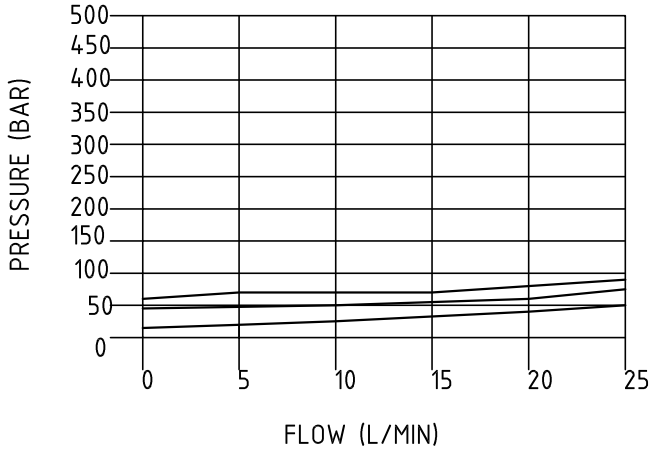
SETTING PRESSURE TABLE

RV25/34	Optimized	Total
	Y= 20÷70	
A= 10÷160		
B= 181÷280	(100÷290)	
C= 281÷350	(130÷350)	

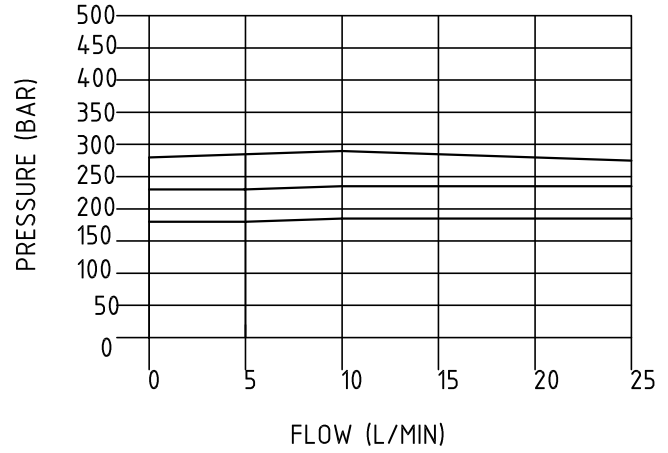
RV 25 34

DIAGRAMMI FLUSSO

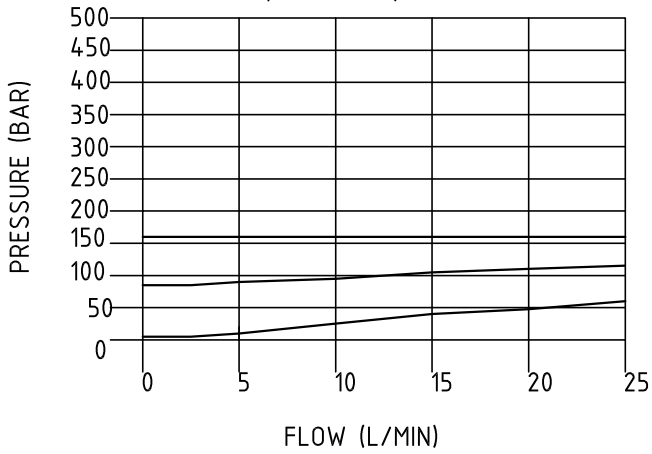
SPRING=Y (15-70BAR)



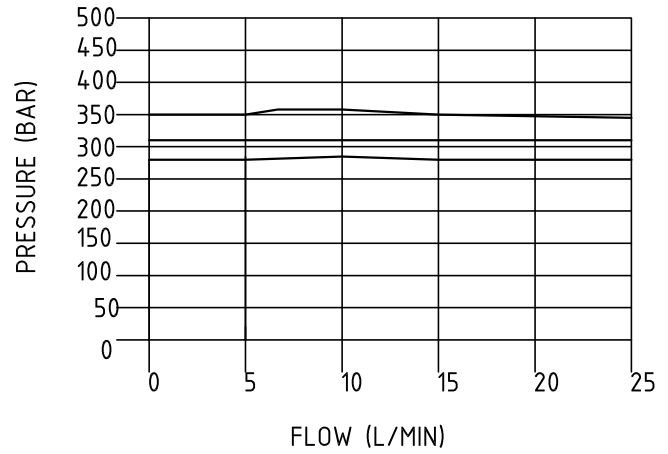
SPRING=B (181-280BAR)



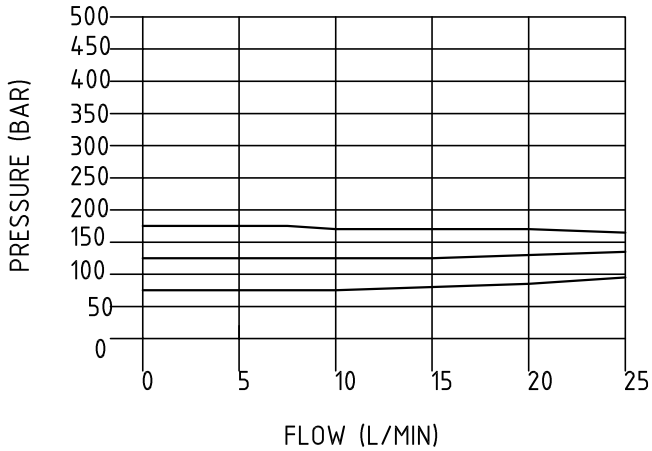
SPRING=S (10-160BAR)



SPRING=G (281-350BAR)



SPRING=N (71-180BAR)



SPRING=V (351-420BAR)

