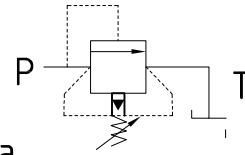


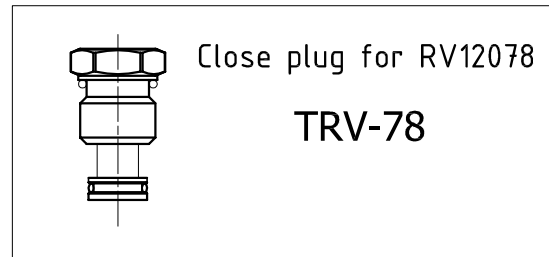
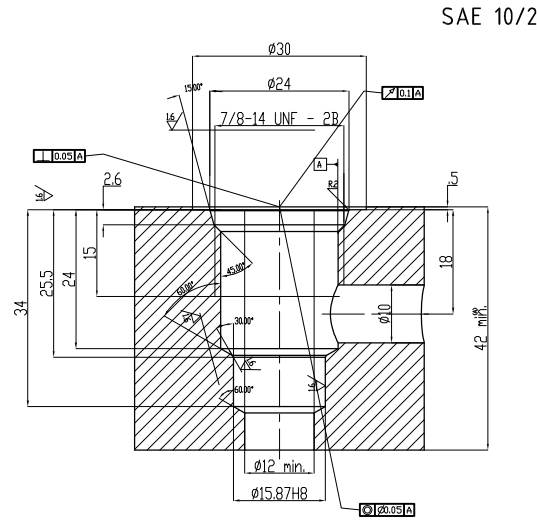
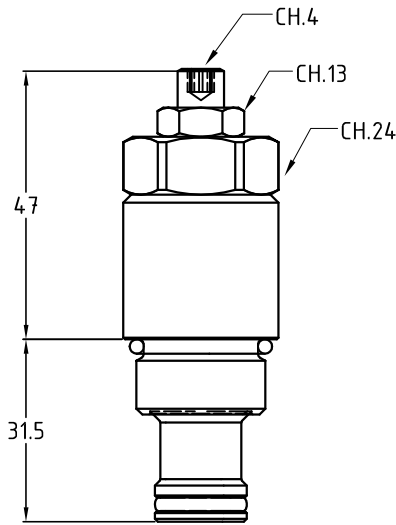


RV 120 78

Hydraulic diagram



Cartuccia di massima pressione ad azione pilotata
Pressure relief valve pilot operated



- La taratura della pressione si ottiene allentando il dado di bloccaggio ch.13 e ruotando la vite della cartuccia ch.4.
- Fluido da utilizzare: olio idraulico a norme DIN 51524 con viscosità compresa tra 30 e 100 mm²/s (cSt) a 40° C
- Filtrazione richiesta del fluido impiegato 25μ
- Temperatura fluido idraulico: da -20° a +75° C

- Calibration pressure is obtained by loosening the lock nut ch.13 and turning the cartridge screw ch.4.
- Fluid to be used: hydraulic oil to DIN 51524 standards with a viscosity between 30 and 100 mm²/s (cSt) to 40° C
- The fluid filtration requested is 25μ
- Temperature hydraulic fluid: -20° to +75° C

Esempio di ordinazione - Ordering code

RV 120 78 *

Cartuccia di massima pressione
Pressure relief valve

120 = 120 L/min.

7/8 = 7/8 unf SAE 10/2

SETTING PRESSURE TABLE

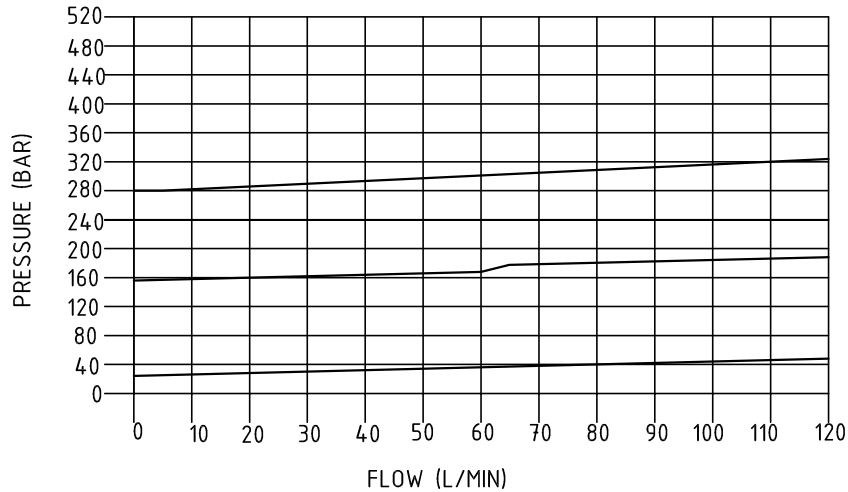
RV120/78	Total
	A= 20÷280
	B= 140÷280
	C= 280÷420



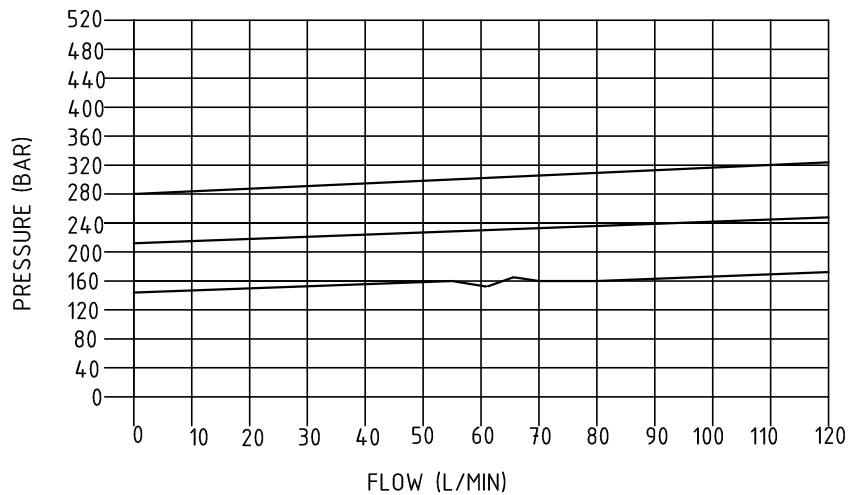
RV 120 78

DIAGRAMMI FLUSSO

SPRING = Y (20-280BAR)



SPRING = N (141-280BAR)



SPRING = B (281-420BAR)

