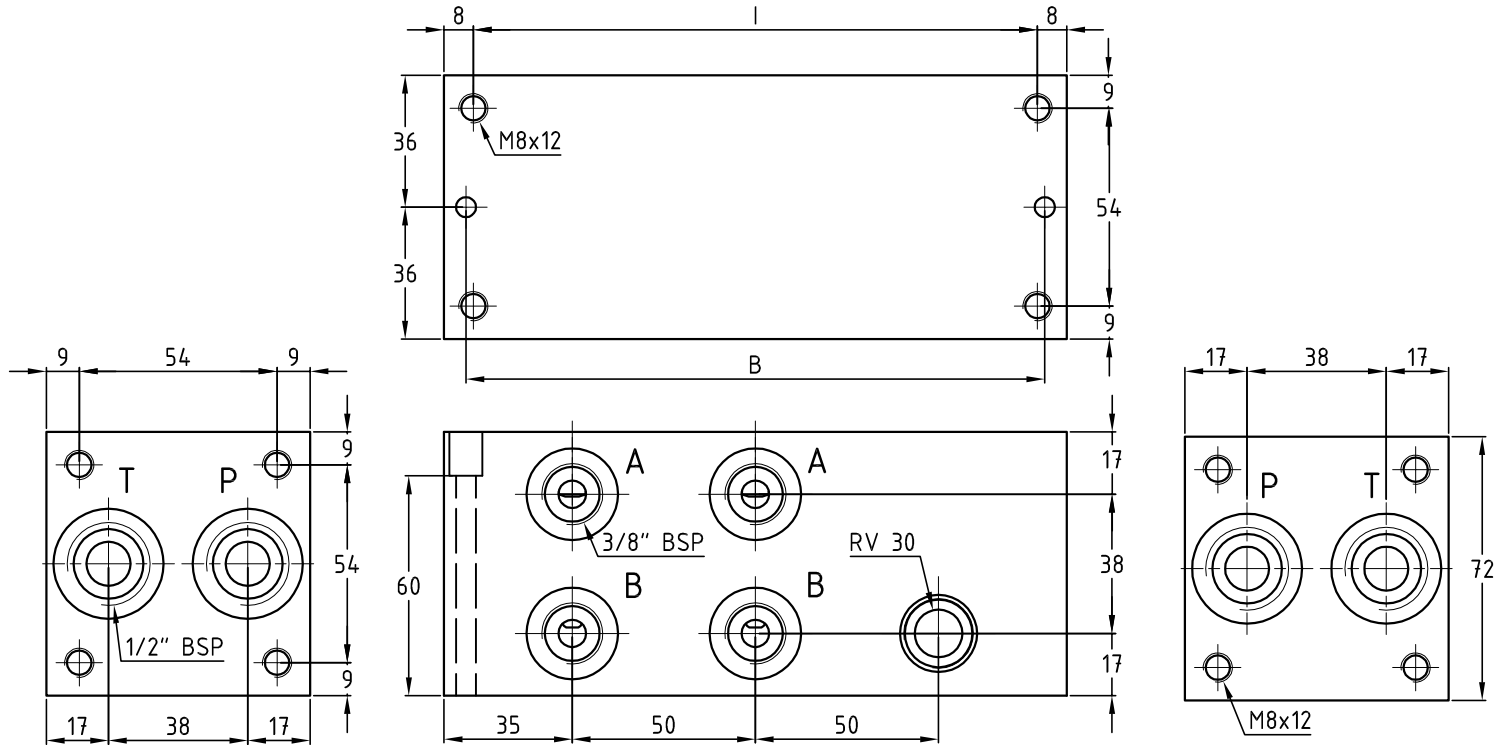
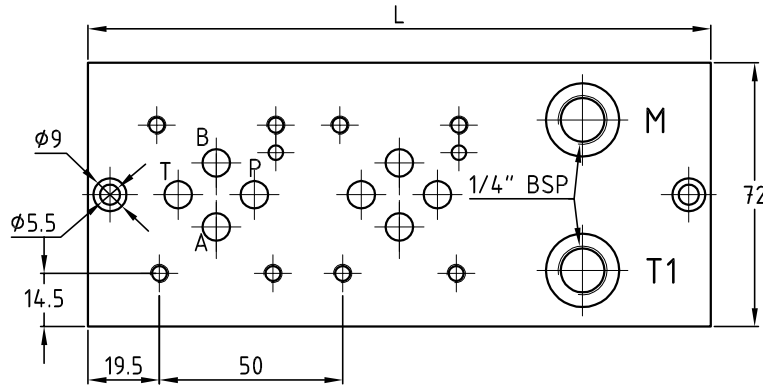
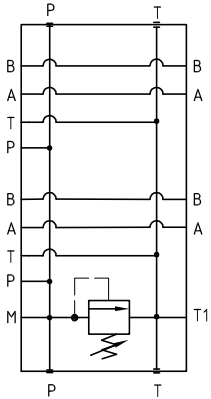


# MB 33

Piastre multiple in ghisa per elettrovalvole Cetop 03 con utilizzi A-B laterali  
 Manifold in cast iron for electrovalves Cetop 03 with A-B side ports



Hydraulic diagram



Dimension table

N° Stat.	L	I	B	Kg
1	120	104	108	3.4
2	170	154	158	4.9
3	220	204	208	6.4
4	270	254	258	7.9
5	320	304	308	9.4
6	370	354	358	10.9
7	420	404	408	12.4
8	470	454	458	13.9
9	520	504	508	15.4
10	570	554	558	16.9

## Esempio di ordinazione - Ordering code

**MB33 / \* S \*\* \* \***

Monoblocco in ghisa Cetop 03  
 Block in cast iron Cetop 03

N° di posizioni  
 Stations number

S = attacchi A-B laterali  
 S = side ports A-B

Su richiesta valvola di massima SAE 10/2  
 On request relief valve SAE 10/2  
 (page M04)

Y=5÷55 bar A=25÷110 bar B=50÷250 bar  
 C=100÷350 bar D=100÷420 bar (page M02)

1 = pred. per valvola di max. RV 30  
 1 = prearranged for relief valve RV 30  
 2 = con valvola di max. RV 30  
 2 = with relief valve RV 30

38 = attacchi da 3/8" BSP  
 38 = ports 3/8" BSP  
 12 = attacchi da 1/2" BSP (su richiesta)  
 12 = ports 1/2" BSP (on request)