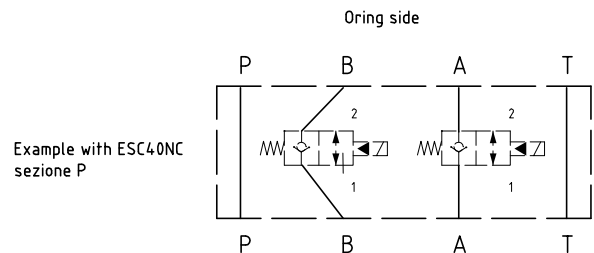
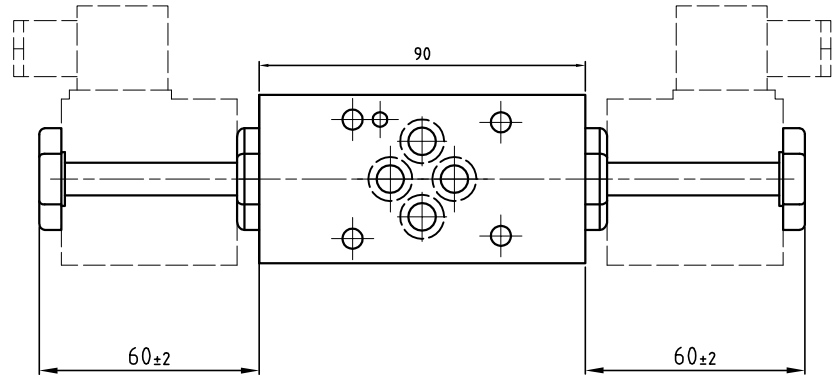
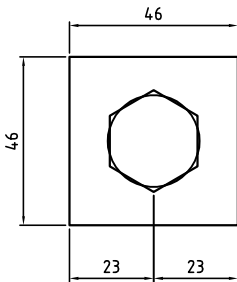


# EMCV3\*\*

Elemento modulare in ghisa con ritegno elettrico  
 Modular element in cast iron with electric check valve



## Esempio di ordinazione - ordering code

**EMCV 3    \*\*    \*\*    \*\***

Elemento modulare in ghisa con ritegno elettrico  
 Modular element in cast iron with solenoid valve

Cetop 03

A = Valvola su A  
 A = Valve on A

B = Valvola su B  
 B = Valve on B

AB = Valvola su A e B  
 AB = Valve on A e B

Tensione solenodie  
 Solenoid coil

12DC=12 VDC    24DC=24 VDC  
 24AC=24 VAC-50/60Hz

110AC=110 VAC-50/60Hz  
 220AC=220 VAC-50/60Hz

Vedere sez. P    NO = normalmente aperto  
 NO = normally open

See section P    NC = normalmente chiuso  
 NC = normally closed