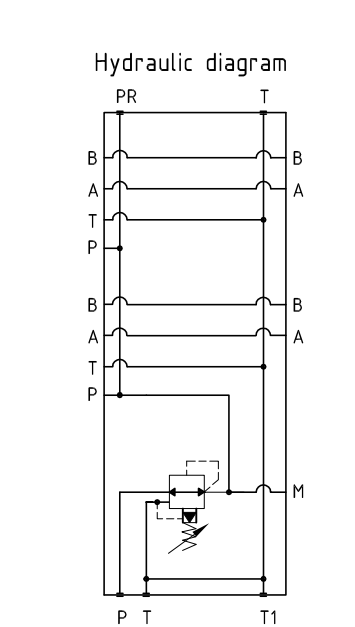
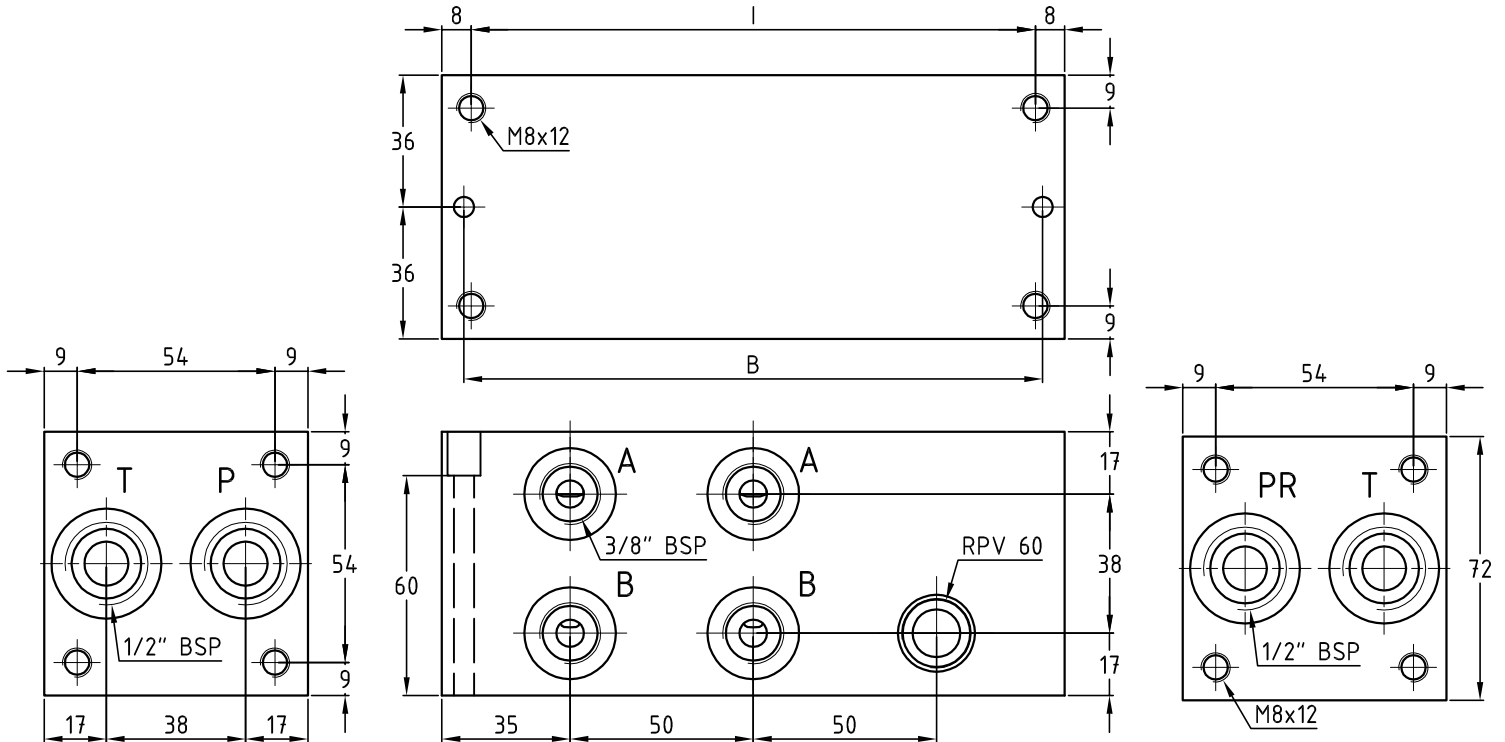


# MB 33 RP

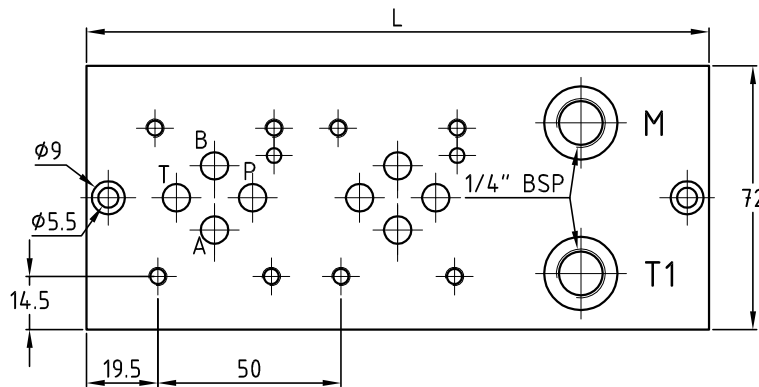
Piastre multiple in ghisa per elettr. Cetop 03 con utilizzi A-B lat. e valv. riduttrice pressione  
 Manifold in cast iron for electrov. Cetop 03 with A-B side ports with reducing pressure valve



Monoblocco in ghisa Cetop 03  
 Block in cast iron Cetop 03

N° di posizioni  
 Stations number

S = attacchi A-B laterali  
 S = side ports A-B



Dimension table

N° Stat	L	I	B	Kg
2	170	154	158	4.9
3	220	204	208	6.4
4	270	254	258	7.9
5	320	304	308	9.4
6	370	354	358	10.9
7	420	404	408	12.4
8	470	454	458	13.9

## Esempio di ordinazione - Ordering code

**MB33 / \* S 38 RP \***

Q = 60 lt/min

- 6 = P max 63 bar
- 10 = P max 100 bar
- 16 = P max 160 bar
- 25 = P max 250 bar
- 35 = P max 350 bar

Con valvola riduttrice di pressione sae 10/3  
 With reducing pressure valve sae 10/3

38 = attacchi da 3/8\"/>
 38 = ports 3/8\"/>