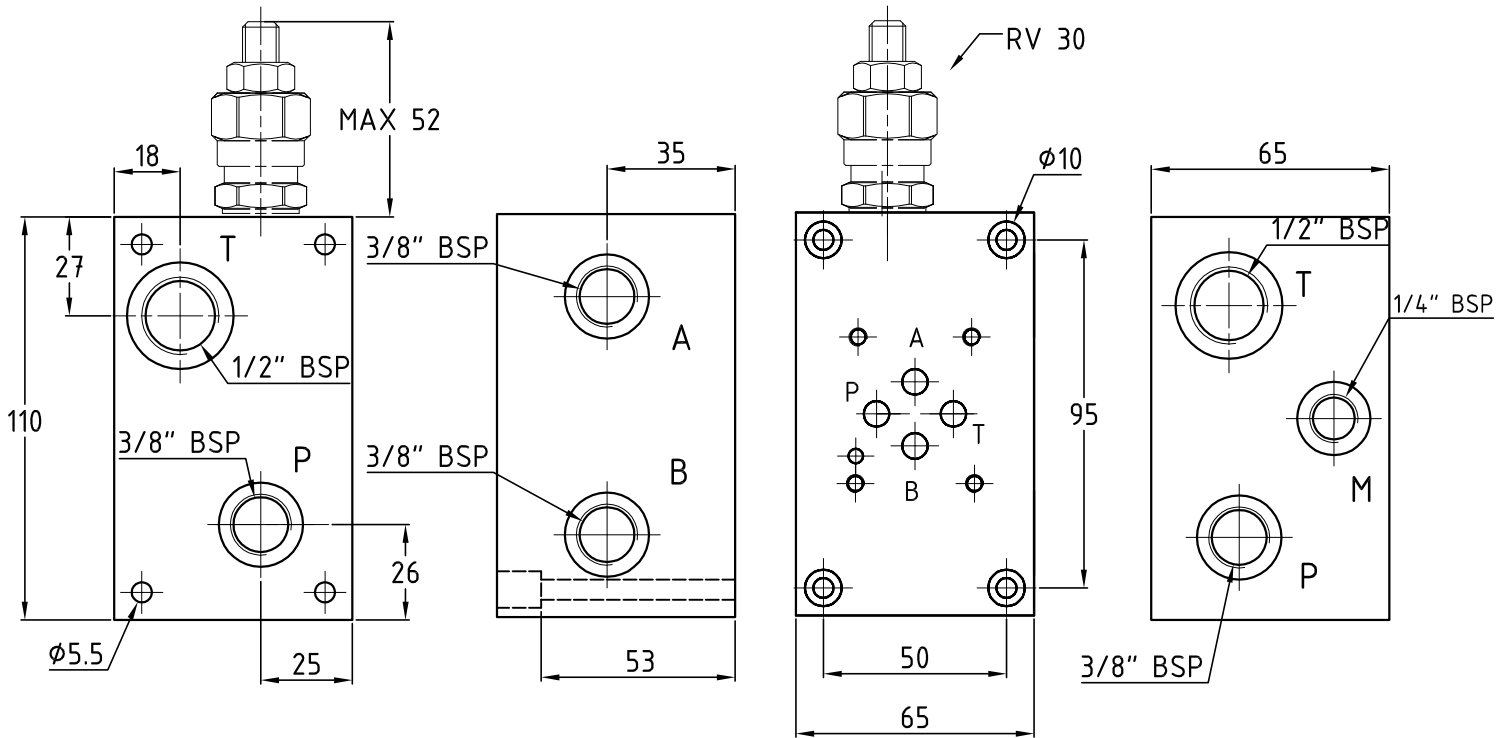
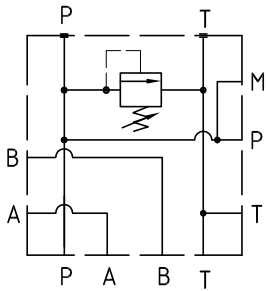


PS3RS12**

Piastra di base Cetop 03 in ghisa con valvola di max. T=1/2" BSP
 Basic element Cetop 03 in cast iron with relief valve T=1/2" BSP



Hydraulic diagram



Peso\Weight 2,6 kg

Esempio di ordinazione - Ordering code

PS3 RS 12 * *

Piastra singola Cetop 03 in ghisa
 Basic element Cetop 03 in cast iron

RS = attacchi posteriori e laterali
 RS = rear and side ports

12 = attacco T 1/2" BSP
 12 = T ports 1/2" BSP

Y=5÷55 bar A=25÷110 bar B=50÷250 bar
 C=100÷350 bar

1 = pred. per valvola di max. RV 30
 1 = prearranged for relief valve RV 30

2 = con valvola di max. RV 30 (pag. M02)
 2 = with relief valve RV 30 (page M02)