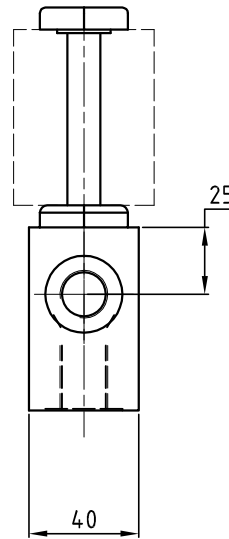
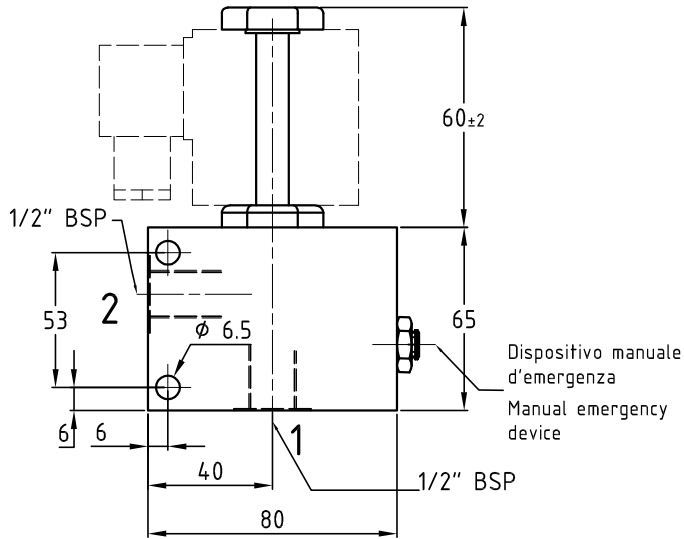
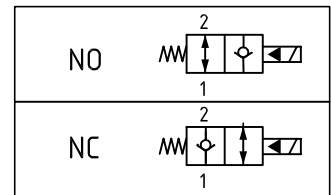


# ESV\*12/34

Valvola elettrica a 2 Vie  
Two ways electrical valve



Hydraulic diagram



Codice Code	Attacchi Ports	Q max Lt/min	P max bar
ESV-12	1/2" BSP	70	250 alluminio/alluminium
ESV-34	3/4" BSP		350 acciaio/steel

- Fluido da utilizzare: olio idraulico a norme DIN 51524 con viscosità compresa tra 30 e 100 mm<sup>2</sup>/s (cSt) a 40° C
- Filtrazione richiesta del fluido impiegato 25 μ
- Temperatura fluido idraulico: da -20° a +75° C

- Fluid to be used: hydraulic oil to DIN 51524 standards with a viscosity between 30 and 100 mm<sup>2</sup>/s (cSt) to 40° C
- The fluid filtration requested is 25 μ
- Temperature hydraulic fluid: -20° to +75° C

## Esempio di ordinazione - ordering code

ESV \* \*\* \*\* - \*\*

Valvola elettrica 2 vie  
Electrical valve 2/2

A = Corpo in alluminio  
A = Aluminium body

S = Corpo in acciaio  
S = Steel body

12 = Attacchi 1/2" BSP  
12 = Ports 1/2" BSP

34 = Attacchi 3/4" BSP  
34 = Ports 3/4" BSP

Tensione solenodie  
Solenoid coil

12DC=12 VDC 24DC=24 VDC  
24AC=24 VAC-50/60Hz

110AC=110 VAC-50/60Hz  
220AC=220 VAC-50/60Hz

NO = normalmente aperto  
NO = normally open

NC = normalmente chiuso  
NC = normally closed