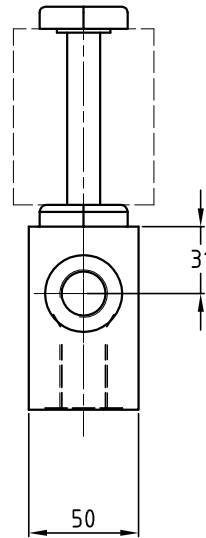
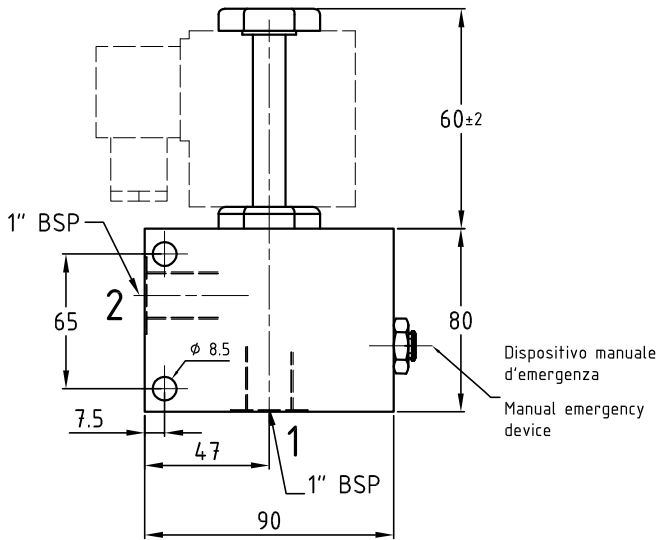
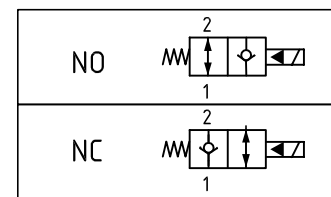


ESV*100

Valvola elettrica a 2 Vie
Two ways electrical valve



Hydraulic diagram



Codice Code	Attacchi Ports	Q max Lt/min	P max bar
ESV-100	1" BSP	150	250 alluminio/aluminium
			350 acciaio/steel

- Fluido da utilizzare: olio idraulico a norme DIN 51524 con viscosità compresa tra 30 e 100 mm²/s (cSt) a 40° C
- Filtrazione richiesta del fluido impiegato 25µ
- Temperatura fluido idraulico: da -20° a +75° C

- Fluid to be used: hydraulic oil to DIN 51524 standards with a viscosity between 30 and 100 mm²/s (cSt) to 40° C
- The fluid filtration requested is 25µ
- Temperature hydraulic fluid: -20° to +75° C

Esempio di ordinazione - ordering code

ESV * 100 ** - **

Valvola elettrica 2 vie
Electrical valve 2/2

A = Corpo in alluminio
A = Aluminium body

S = Corpo in acciaio
S = Steel body

100 = Attacchi 1" BSP
100 = Ports 1" BSP

Tensione solenodie
Solenoid coil

12DC=12 VDC 24DC=24 VDC
24AC=24 VAC-50/60Hz

110AC=110 VAC-50/60Hz
220AC=220 VAC-50/60Hz

NO = normalmente aperto
NO = normally open

NC = normalmente chiuso
NC = normally closed