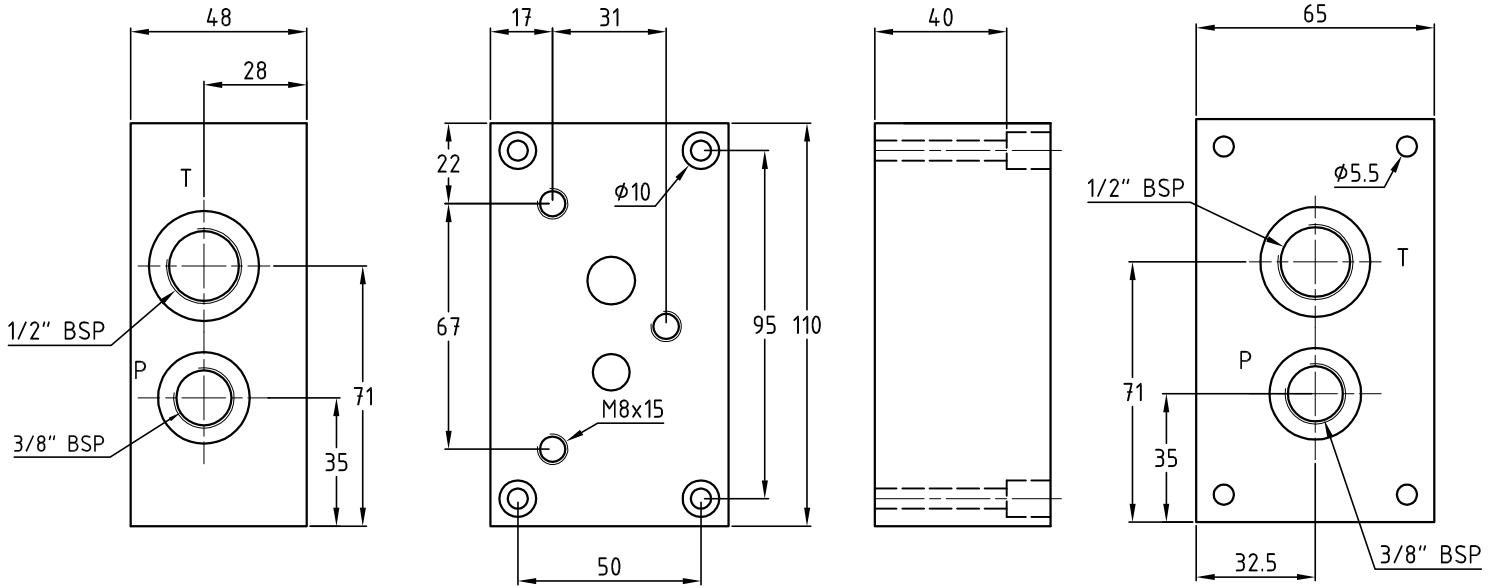
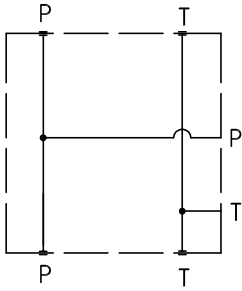


PC33B

Piastra di base in ghisa modulare a 3 tiranti
Basic element 3 tie-rods in cast iron



Hydraulic diagram



Fornita con \ Supplied with :
1 tappo\plug 1/4" BSP
1 tappo\plug 3/8" BSP

Peso\Weight 2,1 kg

Esempio di ordinazione - Ordering code

PC3 3 B

Piastra componibile in ghisa Cetop 03
Packing plate in cast iron Cetop 03

N° 3 tiranti
N° 3 tie-rods

Piastra di base
Basic element