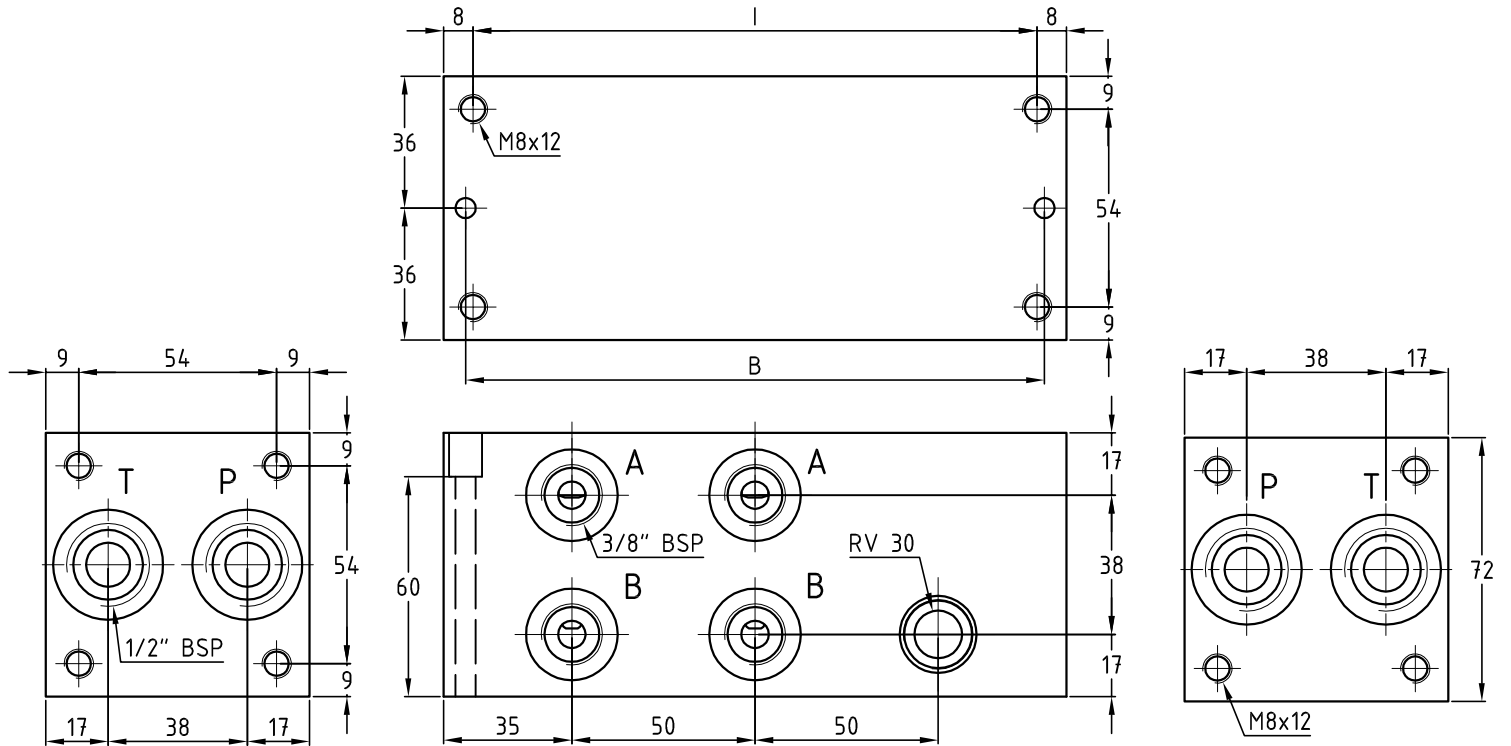


MBS 33

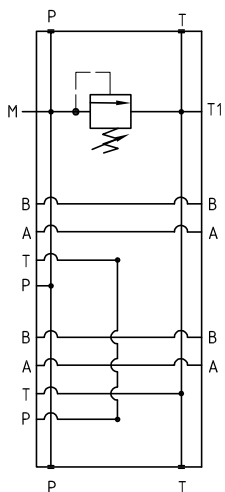
Piastre multiple in ghisa per elettrovalvole Cetop 03 con utilizzi A-B laterali
 Manifold in cast iron for electrovalves Cetop 03 with A-B side ports



Dimension table

N° Stat.	L	I	B	Kg
2	170	154	158	4.9
3	220	204	208	6.4
4	270	254	258	7.9
5	320	304	308	9.4
6	370	354	358	10.9

Hydraulic diagram



Esempio di ordinazione - Ordering code

MBS33 / * S ** * *

Monoblocco in ghisa Cetop 03 coll. serie
 Block in cast iron Cetop 03 series conn.

N° di posizioni
 Stations number

S = attacchi A-B laterali
 S = side ports A-B

Y=5÷55 bar A=25÷110 bar B=50÷250 bar
 C=100÷350 bar D=100÷420 bar (page M02)

1 = pred. per valvola di max. RV 30
 1 = prearranged for relief valve RV 30
 2 = con valvola di max. RV 30
 2 = with relief valve RV 30

38 = attacchi da 3/8" BSP
 38 = ports 3/8" BSP
 12 = attacchi da 1/2" BSP (su richiesta)
 12 = ports 1/2" BSP (on request)